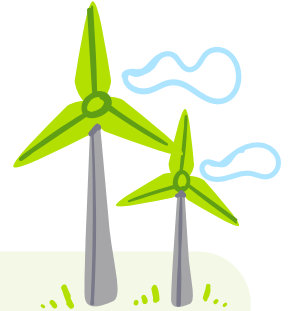


THE POWER OF WIND



CHALLENGE
Build a simple
wind turbine model!



The Challenge

Work together in groups to design and create a basic wind turbine.

Steps

1. Discuss how wind turbines work and why they are important for producing clean energy.
2. Collect items like cardboard, paper, straws, plastic bottles, wooden sticks to build the wind turbine.
3. Sketch a simple design for your wind turbine.
4. Assemble your wind turbine using your materials.
5. Use a fan or blow air to see how well your turbine spins. You can make improvements then.



Did you know that

When the wind blows consistently, the turbines can turn at the right speed and capture more energy. This helps them produce more electricity, which can power homes or even entire towns. The stronger and more regular the wind, the more power the turbine can generate, especially in places like coastlines or high, windy areas.



Co-funded by
the European Union

Source: EU wind energy page
@ energy.ec.europa.eu website



VOYAGER
EMPOWERING YOUTH,
TRANSFORMING
TOMORROW!