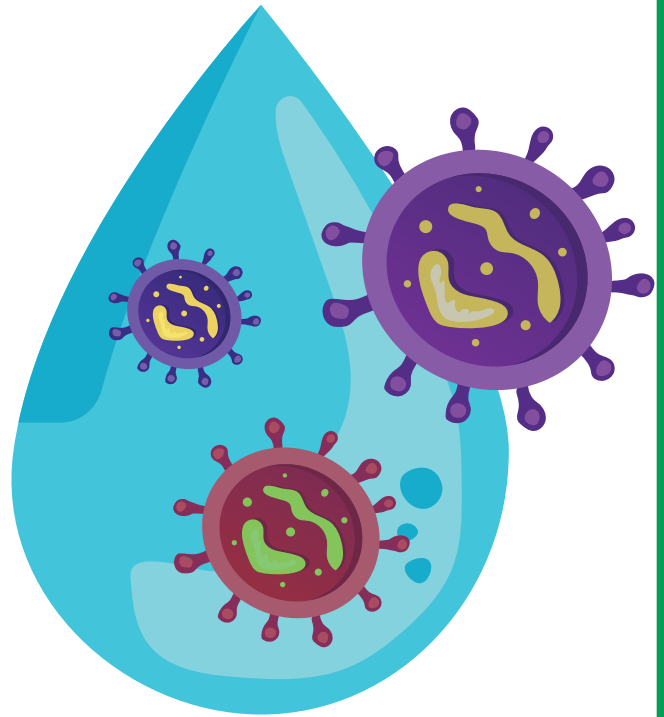


Water Pollution

Water pollution is a major environmental issue that occurs when harmful substances, such as chemicals, plastics, or waste, enter water bodies like rivers, lakes, and oceans. These pollutants contaminate the water, making it unsafe for humans, animals, and plants.

Sources of water pollution:

- **Industrial Waste:** Factories release toxic chemicals into rivers and lakes.
- **Agricultural Runoff:** Fertilizers and pesticides wash into water bodies.
- **Plastic Waste:** Millions of tons of plastic end up in oceans every year.
- **Sewage and Wastewater:** Untreated sewage contaminates water sources.
- **Oil Spills:** Leaks from oil rigs and tankers harm marine life.



Effects of water pollution:

- Kills marine life and disrupts ecosystems.
- Spreads diseases like cholera and typhoid.
- Reduces access to clean drinking water.
- Damages industries that depend on clean water, like fishing and tourism.

Did you know?

- Only about half of the world's wastewater is treated properly, while the other half is dumped back into the environment without any treatment.
- Every year, plastic pollution kills over 100,000 marine mammals, causing severe harm to ocean ecosystems.
- Ensuring access to clean water, proper sanitation, and hygiene could save 1.4 million lives annually, highlighting the urgent need for better water management.

Source: aquatechtrade.com, who.int, wwf.org.au



Co-funded by
the European Union

